

BLAST LIGHT



Better Visibility - Beter Blasting

This premium light is Available with a 20w or 35w halogen bulb and features a very tough cast aluminum housing. The Blast Light operates on low voltage (12VDC) and is available with a 120VAC converter for use with standard wall outlet voltage.



12V BLAST LITE ASSYS

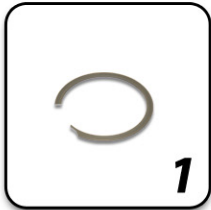
| | |
|---------|---|
| LITE100 | BLAST LIGHT COMPLETE, 12V, HALOGEN, 20W, 10' CORD |
| LITE200 | BLAST LIGHT COMPLETE, 12V, HALOGEN, 35W, 10' CORD |



120V BLAST LITE ASSYS

| | |
|-------------|--|
| LITE100-075 | BLAST LIGHT COMPLETE, W/120VAC TO 12VDC CONVERTER, HALOGEN, 20W, 75' CORD |
| LITE100-125 | BLAST LIGHT COMPLETE, W/120VAC TO 12VDC CONVERTER, HALOGEN, 20W, 125' CORD |
| LITE100-150 | BLAST LIGHT COMPLETE, W/120VAC TO 12VDC CONVERTER, HALOGEN, 20W, 150' CORD |

Replacement Parts



LITE101

BLAST LIGHT, OUTER LENS RETAINING CLIP

1



LITE105

BLAST LIGHT, LAMP SOCKET

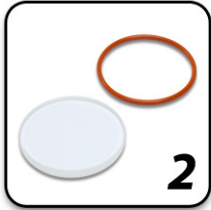
4



3231

STRAIN RELIEF FITTING

6



LITE102

BLAST LIGHT, PYREX LENS, INCLUDES O-RING

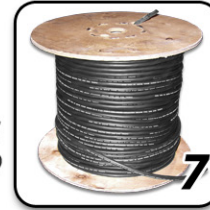
2



LITE106

BLAST LIGHT, BODY ONLY, INCLUDES HOSE MOUNT BRACKET AND BUMP RING

5



10-203

CONTROL CORD, 16.2, 2 WIRE

7



LITE286

BLAST LIGHT, 20 WATT REPLACEMENT BULB

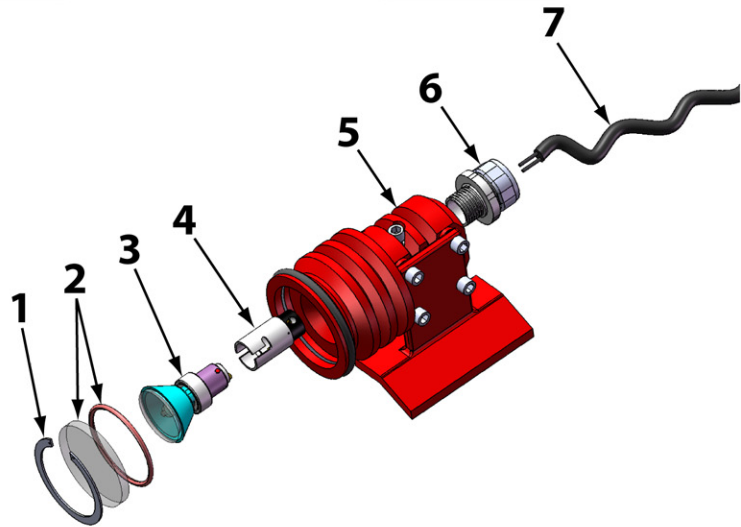
3



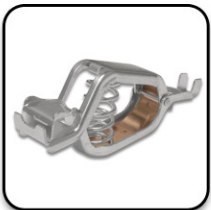
LITE284

BLAST LIGHT, 35 WATT REPLACEMENT BULB

3



Commonly Purchased With



7110-024

ALLIGATOR CLIP (2 REQUIRED)



PB-31131

1/2" 3 PART SEALED CONTROL CORD CONNECTOR



7111-261

INSULATOR, RED



7111-262

INSULATOR, BLACK

Proudly Distributed By:

